

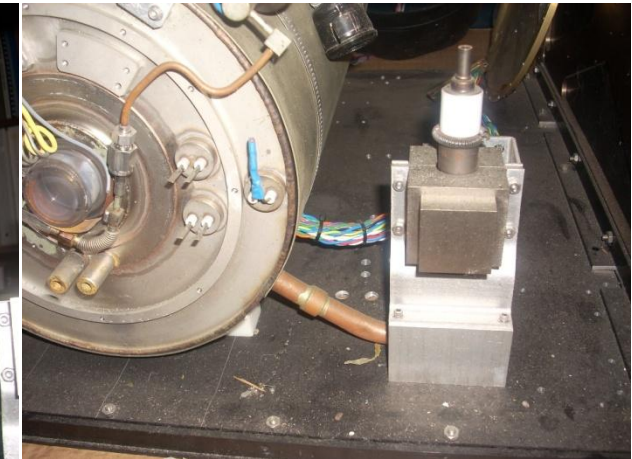
Hydride canister & vacuum gauge tube



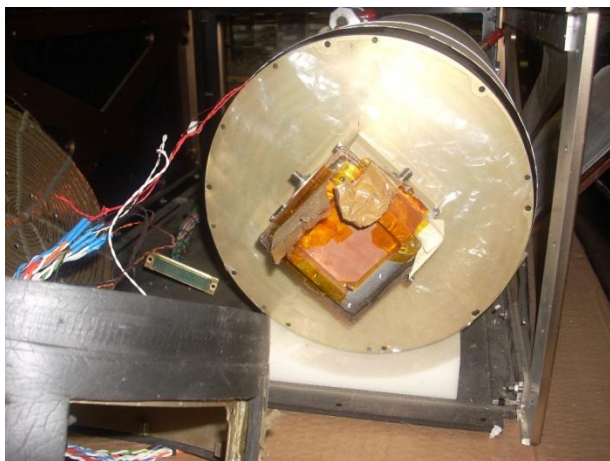
Hydride canister and SS pressure sensor



Disassociator end



Ion pump



RF end



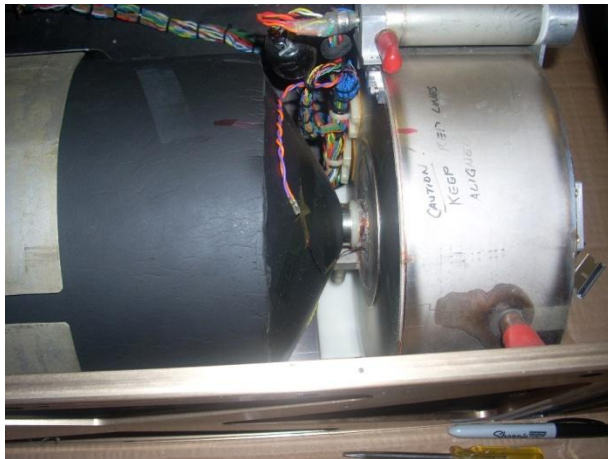
RF enclosure heater and thermistor



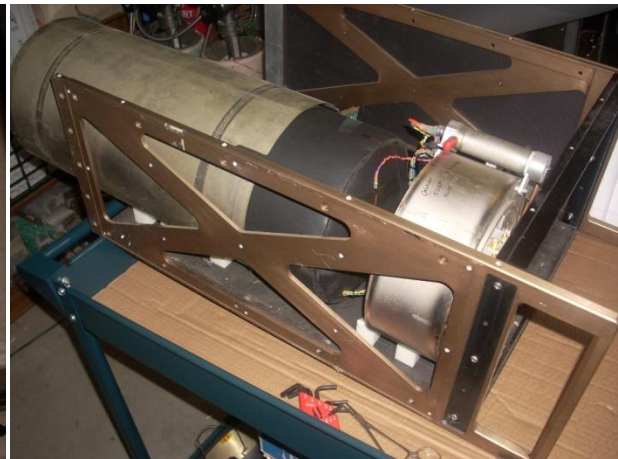
Starting to slide back shield



More sliding back



Neck coil found



Even more sliding back



Shield off, outer insulation shown



Solid state pressure sensor on canister



Vacuum reading using 531 TC gauge tube



Vacuum reading using ion pump current



One set of the liquid cooling ports



Ion pump protected prior to rotation



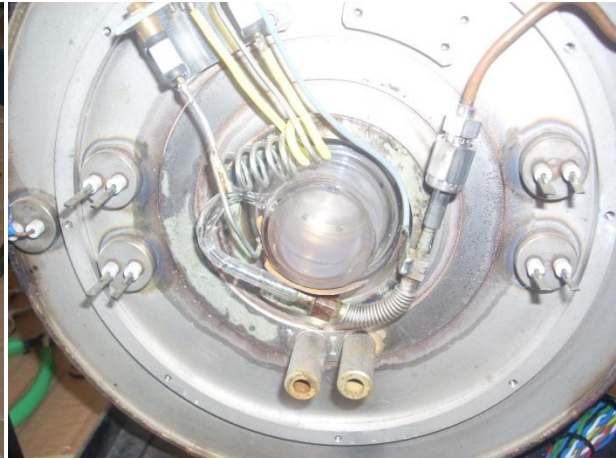
Insulation removal to ID outer oven connects



Cavity rotated to continue removal



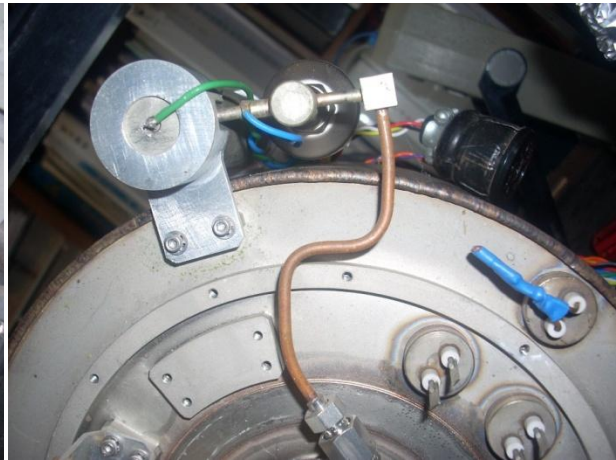
Insulation removed



Close up of disassociator and getter pins  
And other set of liquid cooling ports



Disassociator RF wiring



End of hydride canister



Finding the internal oven connections